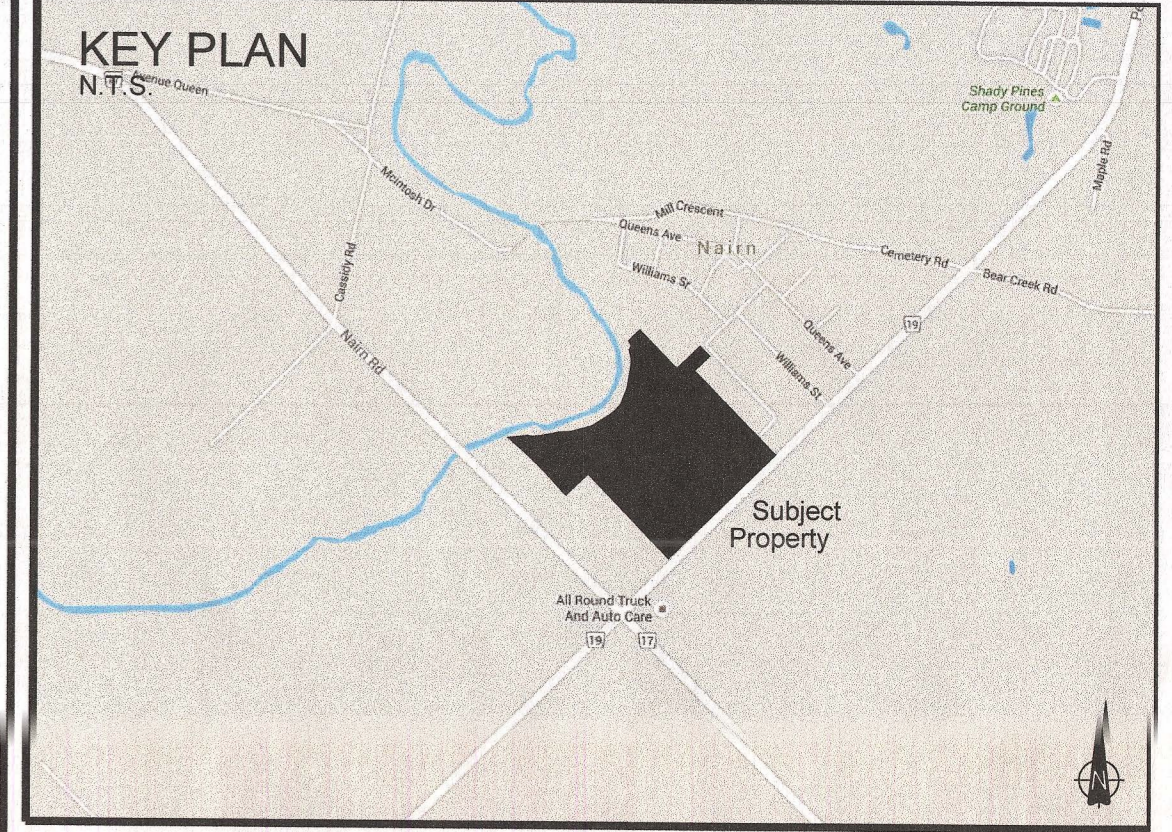
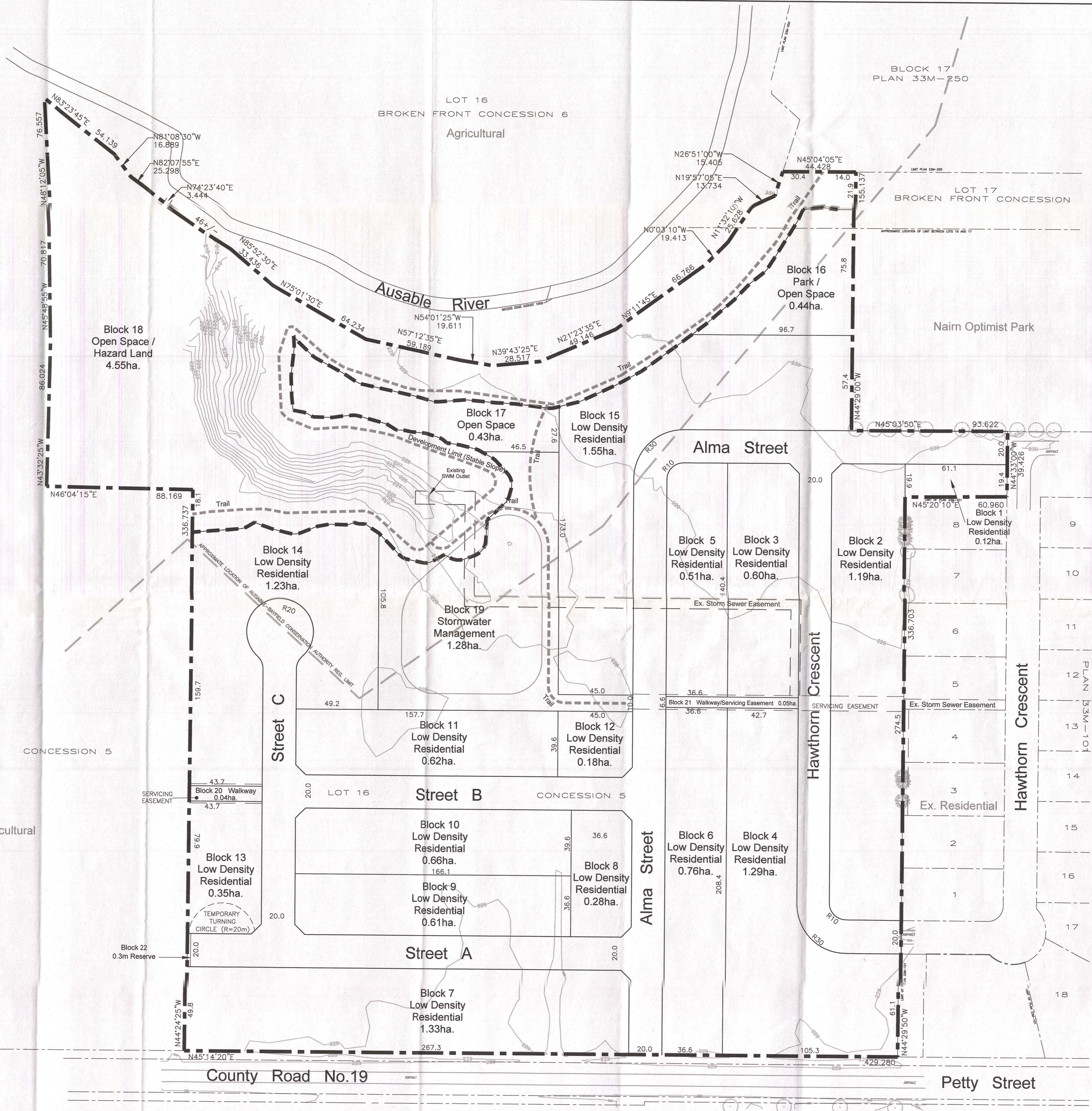


Open Space

LOT 16

Agricultural



DRAFT PLAN OF SUBDIVISION

Part of Lot 16, Concession 5
GEOGRAPHIC TOWNSHIP OF EAST WILLIAMS
Municipality of North Middlesex
County of Middlesex

DESCRIPTION	LOTS/BLKS.	LOTS	AREA (ha.)
Low Density Residential	1-15	140-210	11.29
Park / Open Space	16		0.44
Open Space	17		0.43
Open Space / Hazard Land	18		4.55
Stormwater Management	19		1.28
Walkway / Servicing Easement	20-21		0.09
0.3m Reserve	22		0.00
Roads			3.21
Total		140-210	21.29

ADDITIONAL INFORMATION
(UNDER SECTION 51(17) OF THE PLANNING ACT)
INFORMATION REQUIRED BY CLAUSES a,b,c,d,e,f,g,j and l ARE AS SHOWN ON THE DRAFT PLAN.
h) Municipal water supply
i) Silt clay loan
k) All sanitary and storm sewers as required

OWNER'S CERTIFICATE
I AUTHORIZE THE GSP GROUP INC. TO PREPARE AND SUBMIT THIS DRAFT PLAN OF SUBDIVISION TO THE MUNICIPALITY OF NORTH MIDDLESEX.

Tom Schlegel
Schlegel Urban Developments Corp. March 4th, 2024
DATE

SURVEYOR'S CERTIFICATE
I CERTIFY THAT THE BOUNDARIES OF THE LAND TO BE SUBDIVIDED AND THEIR RELATIONSHIP TO THE ADJACENT LANDS ARE CORRECTLY SHOWN.

Thomas J. Stirling
Thomas J. Stirling, O.L.S. AGM March 4th, 2024
DATE

REVISIONS

NAIRN TRAILS SOUTH



Date: October 4, 2023 Drawn By: S.L.M.N. Dwg. File Name: dp14006d.dwg
Scale: 1:1,250 metric Project No.: 14006